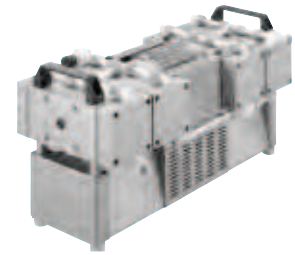


# Diaphragm Vacuum Pumps | DRYFAST® Chemical Duty Pumps



Models  
2052 / 2054



Models  
2163 / 2062 / 2064 /  
2067

PTFE Coated Heads		Flow Rate > 100 L/min		Ultimate Vacuum Pressure ≤ 2 torr	
2163	2054	2064	2067	2052	2062
6.1 (173)	3.4 (100)	6.1 (173)	7.8 (222)	2.3 (65)	4.2 (119)
----	----	----	----	----	----
6 (8)	6 (8)	6 (8)	56 (75)	1.5 (2)	1.5 (2)
29.7	29.7	29.7	27.72	29.9	29.9
0.5/0.6 (370/440)	1/2 (370)	0.5/0.6 (370/440)	0.5/0.6 (370/440)	0.53 (390)	0.53 (370)
No	No	No	No	No	No
hose connector available	1/4 (8)	hose connector available	hose connector available	1/4 (8)	1/4 (8)
NW 16 - 1/4" NPT <sup>2</sup>	NW 16 - 1/4" NPT <sup>2</sup>	NW 16 - 1/4" NPT <sup>2</sup>	NW 16 - 1/4" NPT <sup>2</sup>	NW 16 - 1/4" NPT	NW 16 - 1/4" NPT
72.3 (32.8)	40.3 (18.3)	72.3 (32.8)	72.3 (32.8)	40.3 (18.3)	72.3 (32.8)
21x11x12 (53x28x31)	9x15x7 (23x38x18)	21x11x12 (53x28x31)	21x11x12 (53x28x31)	9x15x7 (23x38x18)	21x11x12 (53x28x31)
88.2 (40.1)	48.5 (22)	88.2 (40.1)	88.2 (40.1)	49.8 (22.6)	40.3 (18.3)
23.6x15.8x16.1 (60x40x41)	18.9x12.6x11.8 (48x32x30)	23.6x15.8x16.1 (60x40x41)	23.6x15.8x16.1 (60x40x41)	10.2x16.6x7.5 (26x42x19)	9.1x15x6.7 (23x38x16.9)
2163B-01 c-UL	2054B-01 c-UL	2064B-01 c-UL	2067B-01 c-UL	2052B-01 c-UL	2062B-01 c-UL
2163C-02 CE	2054C-02 CE	2064C-02 CE	2067C-02 CE	2052C-02 CE	2062C-02 CE
----	----	----	----	----	----

## For a Complete System

**Inlet/Exhaust Separator Jars**  
230 ml glass jar assembly attaches to pump intake or exhaust to capture ingested liquids. See page 79 for replacement Jars.



1423B

Pump Model	CAT. No.
All DryFast models	1423B

## Digital Vacuum Regulator

- Rack mountable
- Variable vacuum control

The Digital Vacuum Regulator works with Welch DryFast™ pumps or any brand dry pump with flow up to 35 l/min torr vacuum ranging from 1 torr(1.3 mbar) to atmosphere. See p. 76 for more information.



Pump Model	CAT. No.
2014, 2034, 2032, 2044, 2042	1640A-01



Component	page
• Traps	69
• CAPTURE Recovery System	71
• Hose	67
• Gauges	76
• Vacuum Regulator	76
• Service Kit	80